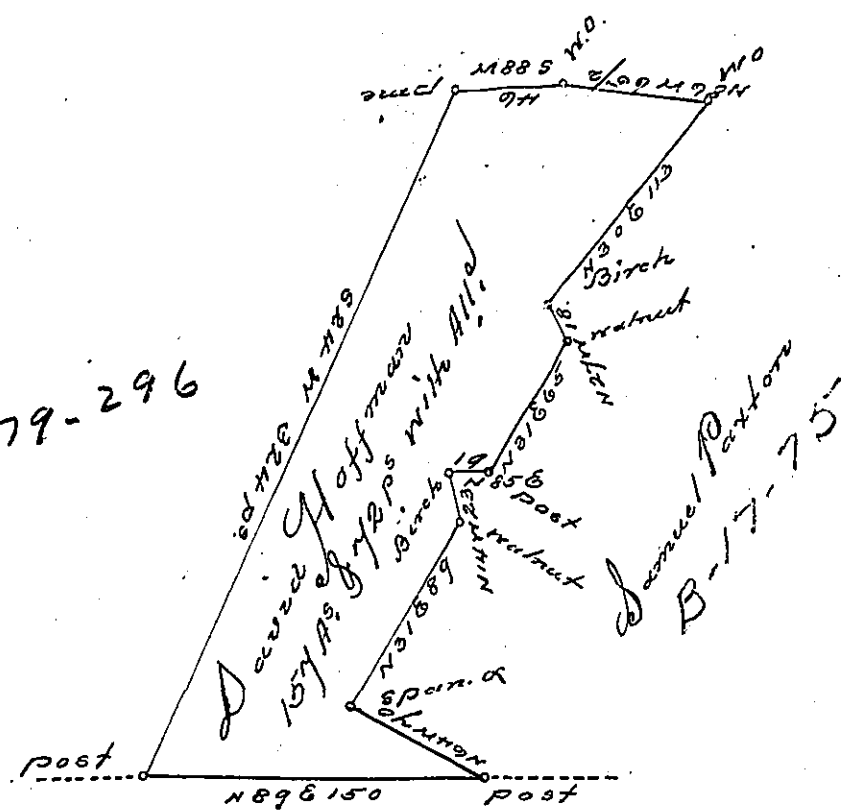


C-79-296



Maryland Line

Situated on the Waters of Evitts Creek, in Cumberland Valley Township Bedford County. Containing 15 1/4 acres and 72 perches with the usual allowance of six per Cent for Roads. Surveyed for David Hoffman the 20th day of September, 1793. And Warrant dated the 14th day of June 1793.

George Woods Justice D.S.

To Daniel Brockhead Esq^r

D.Y.

IN TESTIMONY that the above is a copy of the original remaining on file in the Department of Internal Affairs of Pennsylvania, made conformably to an Act of Assembly approved the 16th day of February, 1833, I have hereunto set my Hand and caused the Seal of said Department to be affixed at Harrisburg, this eighteenth day of April, 1905.

George D. Brown
Secretary of Internal Affairs.